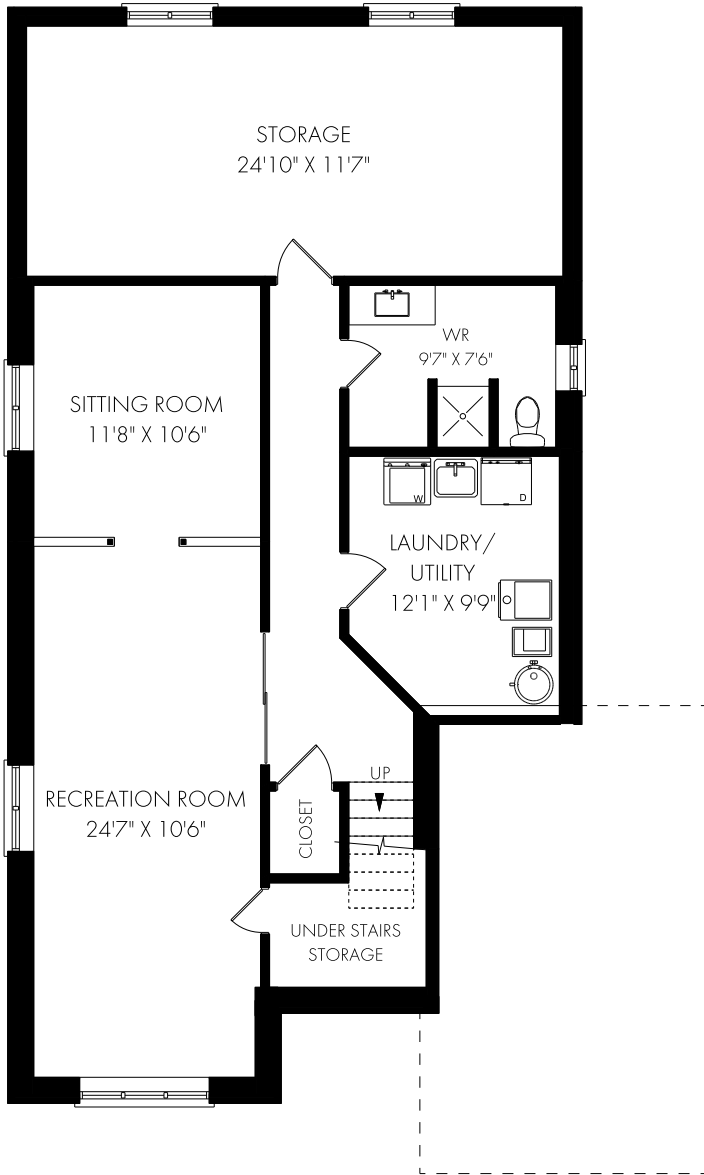
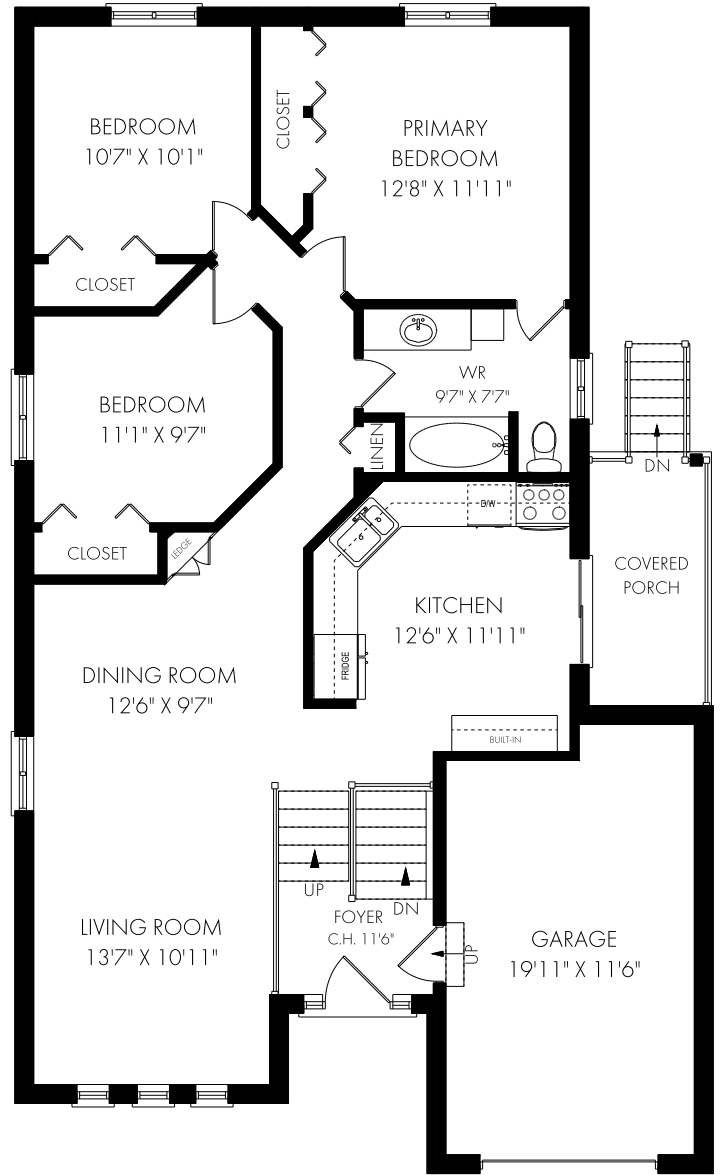


9 Shannon Street, Brantford

FLOOR PLAN



LOWER LEVEL - 1203 SQUARE FEET



CEILING HEIGHT 8'0"
MAIN FLOOR - 1213 SQUARE FEET



Saturday, September 24, 2022

Note: Although measurements and area believed to be accurate they should be considered approximate. This drawing was prepared by Plans4U for the sole benefit and use by the client. No third party may rely on this drawing without the receipt of reliance letter from Plans4U

PLANS4U © 2019 PLANSFORYOU

PlansForYou.ca/ info@plansforyou.ca /416.999.5096