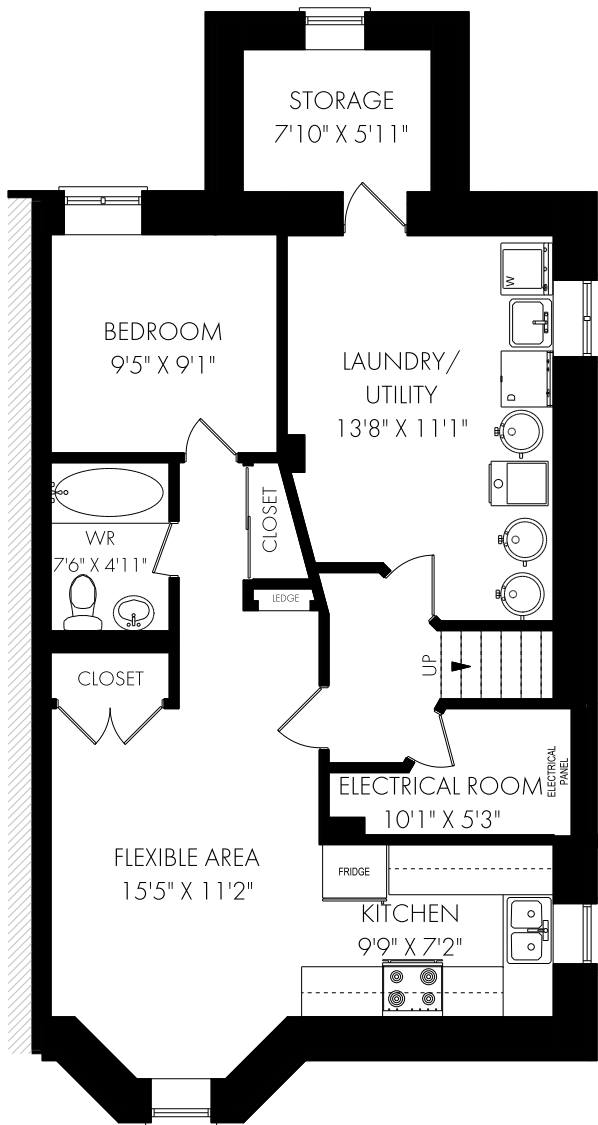


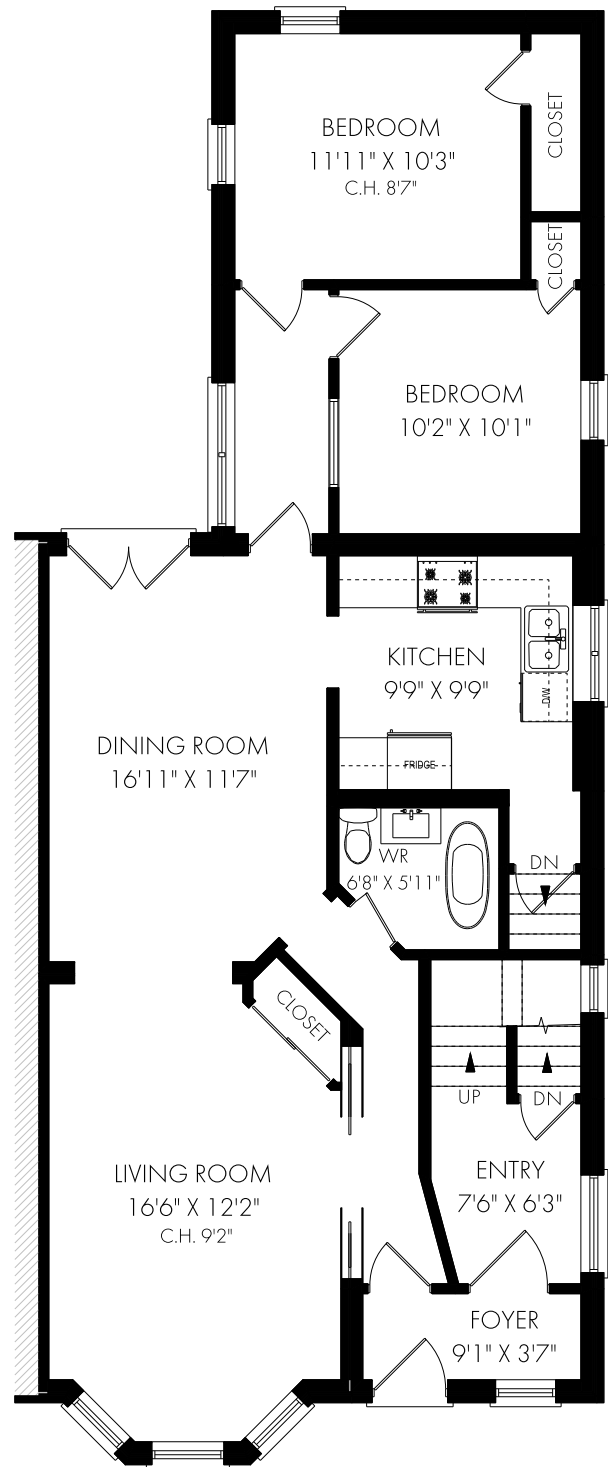
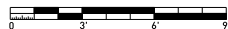
268 Rusholme Road, Toronto



FLOOR PLAN



LOWER LEVEL - 955 SQUARE FEET



MAIN FLOOR - 1229 SQUARE FEET



Thursday, August 19, 2021

Note: Although measurements and area believed to be accurate they should be considered approximate. This drawing was prepared by Plans4U for the sole benefit and use by the client. No third party may rely on this drawing without the receipt of reliance letter from Plans4U

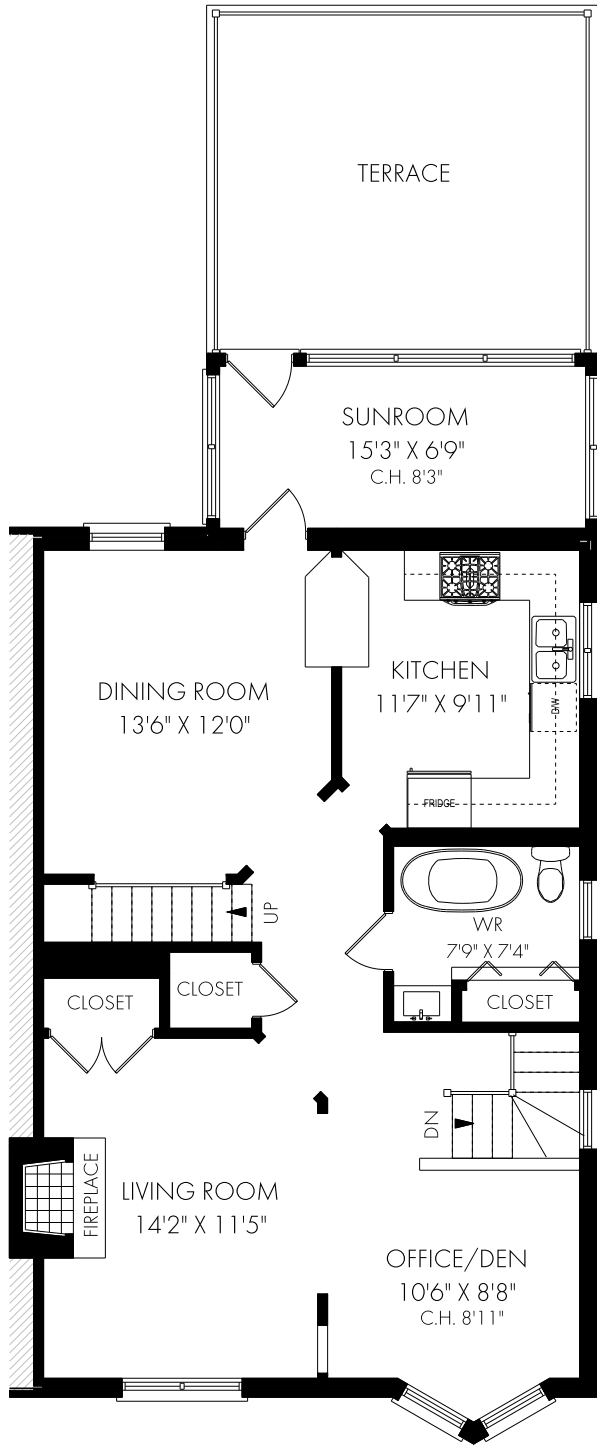
PLANS4U © 2019 PLANSFORYOU

PlansForYou.ca/ info@plansforyou.ca /416.999.5096

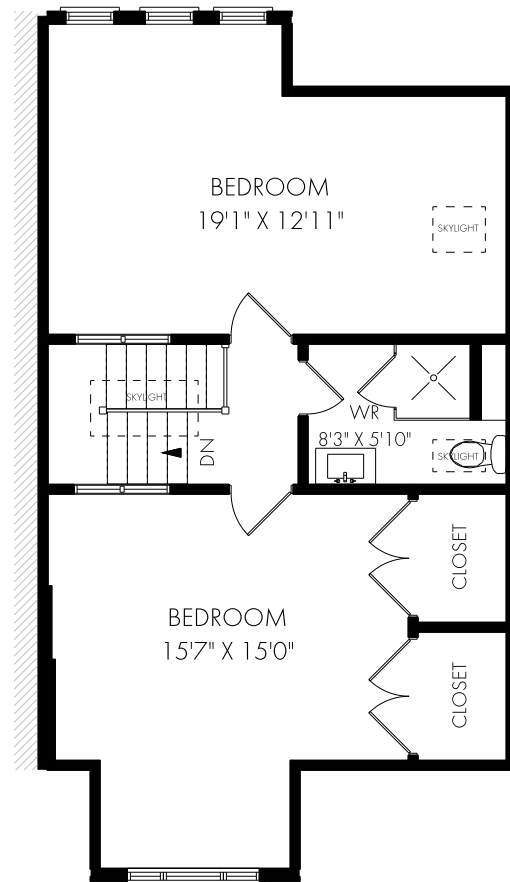
268 Rusholme Road, Toronto



FLOOR PLAN



SECOND FLOOR - 978 SQUARE FEET



CEILING HEIGHT 8'0"

THIRD FLOOR - 641 SQUARE FEET



Thursday, August 19, 2021

Note: Although measurements and area believed to be accurate they should be considered approximate. This drawing was prepared by Plans4U for the sole benefit and use by the client. No third party may rely on this drawing without the receipt of reliance letter from Plans4U

PLANS4U © 2019 PLANSFORYOU

PlansForYou.ca/ info@plansforyou.ca /416.999.5096